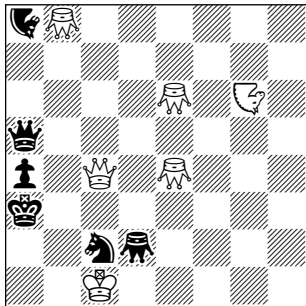


## Dawson Triathlon M.T. 2021

In honour of the 70th anniversary of the death of the English composing genius Thomas Rayner Dawson (1889-1951) – the father of Fairy chess – the British Chess Problem Society announces a Dawson Fairy Triathlon Memorial Tourney 2021. The conditions are as follows:

- The Triathlon includes three tournaments, with a separate ranking for each (Prizes, HM, Comm).
  - Direct mates in 2 moves. Judge: Ofer Comay.
  - Helpmates in 2 moves with at least 2 phases (2 solutions, set and solution, twins, duplex, but no zeropositions). Judge: Sven Trommler.
  - Helpselfmates in 2 to 5 moves (2 solutions, set and solution, etc). Judge: Eric Huber.
- All sections have a free theme, but with the presence of at least one Grasshopper and at least one Nightrider. The combined play of these most famous pieces invented by Dawson must have a thematic significance.
- The use of other fairy pieces, royal units, or units with neutral or half-neutral colour is not permitted.
- Fairy conditions are allowed, but not those that add other fairy pieces or neutral/semi-neutral pieces.
- Each author may send a maximum of two problems per section, but for the complex ranking only the points earned by the highest ranked problem in a section will be taken into account. Entries will be submitted to the judge on uniform diagrams without the names of the authors.
- The Triathlon's ranking will be calculated as follows:
  - In each section the highest-ranked problem (1st prize) receives 20 points (15 points + 5 bonus points), the second place (2nd prize) receives 17 points (14 + 3 bonus points), the 3rd place (3rd prize) receives 14 points (13 + 1 bonus point). Then follows: for 4th place 12 points, for 5th place 11 points ... for 15th place 1 point. Problems that are ranked after 15th place (with HM or Comm) in a section will not receive points for the Triathlon.
  - For the Triathlon ranking the points from all sections are combined. In order to be ranked, a participant must have earned a ranking (up to 15th place) in at least two sections. In the event of a tie the winner will be the composer with the highest total bonus points. Judges may enter another section, but they will not be ranked in the Triathlon.

**1 Hans Peter Rehm**  
2 Pr *Thèmes-64* 1963



#2  
Grasshopper  
Nightrider

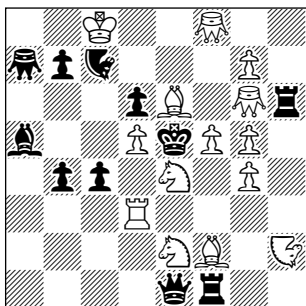
7. Originals must be sent to the director of the tournament, Petko Petkov by email only (ppetkov2702@gmail.com) no later than March 31st, 2021. Only problems checked by computer will be accepted. Entrants must indicate the program with which the problem was tested.

8. The results of the ranking will be published in *The Problemist* by the end of 2021.

Example problems:

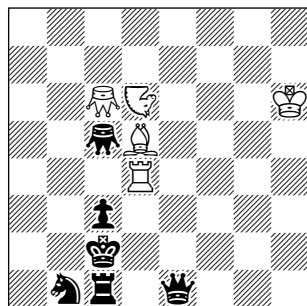
1 1.Kb1! (>2.Qc3) 1...Qb5+ 2.Qb4; 1...Qb6+ 2.Qb5; 1...Qb4+ 2.Qb3; (1...Nxc4 2.Nxc4). Play of white Q/N battery, cross-checks, duel between the queens.

**2 Gerard Smits**  
*Probleemblad* 2008



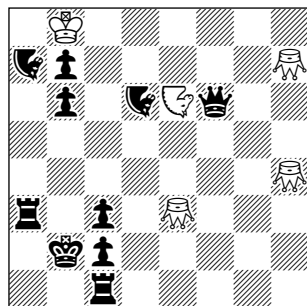
#2 (a) Madrasi (b) Isardam  
Grasshopper  
Nightrider

**3 Chris Feather**  
*Broodings* 2009



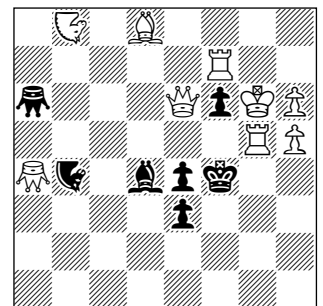
H#2 3.1.1.1  
Grasshopper  
Nightrider

**4 Krasimir Gandev**  
1 Pr *feenschach* 1974  
dedicated to K.Smolders



H#2 2.1.1.1 Circe  
Grasshopper  
Nightrider

**5 Petko A. Petkov**  
1 Pr *Shakhmatnaya*  
*Kompozitsiya* 2005



HS#3 2 solutions  
Grasshopper  
Nightrider

**2** (a) 1.Sf6! (>2.Sd7) 1...Rxc6 **a** 2.Re3 **A**; 1...b5 **b** 2.Nf3 **B**; 1...b6 **c** 2.Bd4 **C**. (b) 1.Sf6! (>2.Sd7) 1...Rxc6 **a** 2.Nf3 **B**; 1...b5 **b** 2.Bd4 **C**; 1...b6 **c** 2.Re3 **A**. Lačný theme in non-standard form, with change of condition between phases.

**3** 1.Qe7 Nc4 2.Gf8 Nd6#; 1.Qe5 Bc4 2.Gf5 Bd5#; 1.Qf2 Rc4 2.Gg1 Rd4#. Creation of 3 white batteries after opening of the battery line by the Gc5, which is then closed by the bQ. This is followed by an additional closing of the bQ combined with white switchback.

**4** 1.Nxh4(Gh8) Ghxa7(Na1) 2.Nb1 Nf4#; 1.Qxe6(Ne8) Gexa7(Na1) 2.Qb3 Gh8#. Very rich strategy demonstrated by the white Gs and black Ns. The Zilahi theme is combined with black self-blocks and model pin-mates.

**5** 1.Qb6 Bxb6 2.Nxf6 Bxd8+ 3.Nh7+ Bf6#; 1.Qc6 Nxc6 2.Bxf6 Nxb8+ 3.Bg7+ Nf6#. Surprising mates with black anti-batteries. Double annihilation, both sides prepare the play of the white battery along the f-file.